

E1650

REMIXING TRANSFER VEHICLE



ENGINEERED INNOVATION



Engineered Innovation

Weiler innovations have transformed the material transfer vehicle market since their introduction and continue to lead the industry with new features designed to increase productivity while reducing operating costs. The E1650 features engineered innovations, from dump hopper to discharge conveyor, in a mid-size transfer vehicle with 15 tons (13.6 mt) of onboard storage and excellent visibility and maneuverability.

1 NON-STOP, NON-CONTACT PAVING.

With 15 tons (13.6 mt) of onboard storage, triple pitch remix augers and 600 tph (544 mtph) discharge capacity, the E1650 keeps the paving train moving while reducing particulate and thermal segregation for smooth, long lasting roads.

2 FRONT MOUNTED OPERATOR.

The operator platform located at the front of the machine provides excellent visibility for a storage MTV. 24" (610 mm) shifting platform gives the operator a better line of sight to communicate with ground, paver and trucking personnel.





3

NARROW WIDTH.

The 8' 6" (2.6 m) width from outside of tire to outside of tire of the E1650 provides room to work for the ground operator on narrow roads.

4

REAR STEER OPTION.

The optional rear steer provides an inside turning radius of 17' (5.2 m) for excellent maneuverability. Rear steer can be utilized in crab or coordinated steering mode and returns to center upon demand.



Superior Material Handling

Keep the paving train moving. The quick transfer of material from trucks to the paver is key to non-contact, non-stop paving. Weiler's innovative features help ensure smooth truck exchanges to keep the operation moving and hit smoothness bonuses.



1

SMOOTH TRUCK EXCHANGES.

Keep the paving train running smoothly with the hydraulically extendable, oscillating push roller that matches varying truck configurations. The integrated scrapers and easy-to-remove rollers simplify maintenance.

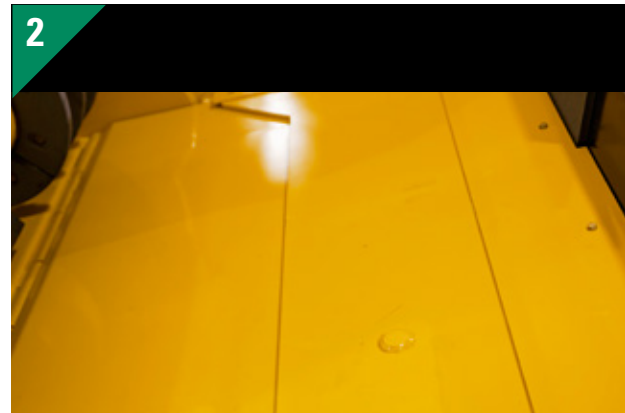


2

DUMP ASSIST.

The dump assist hydraulic moving floor helps pull the last remaining material from the truck. A single push of a button activates the movement to minimize truck exchange time.

2



3

AUTO DUMP.

The auto dump feature raises the dump hopper in stages and the baffle with the push of a button. The dump speed is in relation to chain speed and will pause if the chain stops. Push the button once cycle has completed and the hopper and baffle lower to operating position.

3



4

OFFSET PAVING.

The 600 tph (544 mtph) capacity discharge conveyor swings out 9' 11" (3 m) to either side of the machine for offset paving. The ability for the conveyor to lift the paver hopper insert eliminates the need for additional equipment on the jobsite.

4





Control Your Cost of Operation

Reduce maintenance costs. In an industry where contractors can spend tens of thousands of dollars on machine maintenance per year, controlling the cost of operation can make the difference in your bottom line. At Weiler, we take the call to control cost of operation seriously, with the goal of extending machine life through innovative design and the use of durable, high-quality components in our manufacturing process.

1

SPLIT SHAFT DESIGN.

Our split foot shaft design features separated center bearings for simplified service. Bearings have triple-seal protection, along with protected, remote grease lines to extend the life of the component.

1



2

QUALITY FIRST.

At Weiler, we understand our machines are the sum of their parts. For example, our solid, one-piece machined head shafts undergo extensive machining in-house which reduces fatigue failures found with welded joints.

2

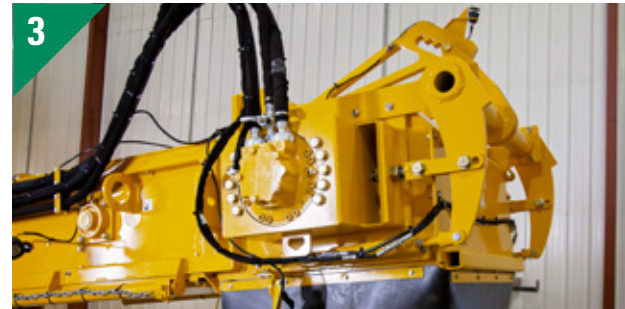


3

AUTOMATIC CHAIN TENSIONING.

The automatic hydraulic chain tensioner sets proper chain tension every 40 hours. Proper and even chain tension extends the life of wear components and the automatic feature makes it one less maintenance point the crew has to perform themselves.

3



4

MINIMIZE COMPONENTS.

High-torque, direct-drive motors power the elevator and conveyors for maximum hydraulic efficiency while eliminating high-wear planetary gear boxes. A loop flush return system provides thermal relief and extends the life of the motor.

4



5

CHROMIUM CARBIDE.

An abrasion-resistant, chromium carbide wear plate is standard below the conveyor foot shaft. Chromium carbide floor plates are optional on the conveyor or both the conveyor and elevator for extended wear life.

5



Making the Most of Your Machine Operation

Operator comfort is key to a productive day on the job. The high back seat, easy-to-reach controls and shifting platform, located at the front of the machine, give the operator complete control of the E1650 while providing excellent visibility. Innovative Weiler features enhance operation and crew productivity.

1

EXCELLENT VISIBILITY.

Located at the front of the machine, the hydraulically extendable operator's platform shifts 24" (610 mm) in either direction, giving the operator a better line of sight to communicate with ground, paver and trucking personnel.

2

WITHIN EASY REACH.

Ergonomic controls located within easy reach of the operator. The operator station shifts side-to-side and features a high-back, heated suspension seat that rotates 357°.

3

MAINTAIN YOUR DISTANCE.

The optional distance to paver control utilizes a radar to keep the E1650 and paver at a set distance and can be engaged from either a stopped or moving position.

4

PAVER HOPPER MANAGEMENT.

The optional paver hopper management system features a sonic sensor that maintains the level of material in the hopper insert by controlling the speed of the elevator and discharge conveyor.

5

GROUND LEVEL CONTROL.

The dual-side, ground-level control panels allow the ground operator complete control of the dump hopper, elevator and tire spray down system. The panel is angled for accessibility and the buttons are backlit for enhanced visibility.

6

CONVEYOR CONTROL STATION.

Located at the rear of the machine, the conveyor control station allows complete control of the discharge conveyor from ground level to simplify daily maintenance and hopper insert placement into the paver.

7

CANOPY COVER.

Optional canopy is available with or without glass and wipers. Canopy easily folds down with pressurized shocks for transport.

8

BLADE LIGHTS.

Optional LED blade lights improve visibility for night time work. The four (4) lights are available in either AC or DC and include mounting poles.



Keeping It Clean

Along with high quality components and design, keeping key daily, weekly and monthly maintenance schedules help extend machine life and adds residual value to your initial investment. Making it easier for your road crew to clean and monitor wear on the transfer vehicle pays dividends in the long run. Weiler has made a commitment to simplifying daily cleanout by embracing a design philosophy with a focus on accessibility.

1

AUGER ACCESS.

The full-width hydraulic cleanout door allows full access to the dump hopper, so crews can cleanout the excess material that creates build-up, especially on the corner augers.

2

SAVE HOURS.

Full-width drop down floors simplify cleanout and make it easier to perform chain inspection, saving your crew hours of time.

3

HOPPER ACCESS.

Four clam shell doors allow ground level access to hopper and remix augers for simplified service and clean-out. Daily clean-out of augers is critical to keeping your transfer vehicle well maintained and performing productively.

4

CONVEYOR CLEANOUT.

A hydraulic, full-width drop down floor simplifies cleanout and chain inspection for this regular inspection point.

5

ENGINE ACCESS.

Large doors provide excellent access to the engine, hydraulic components and radiator.

6

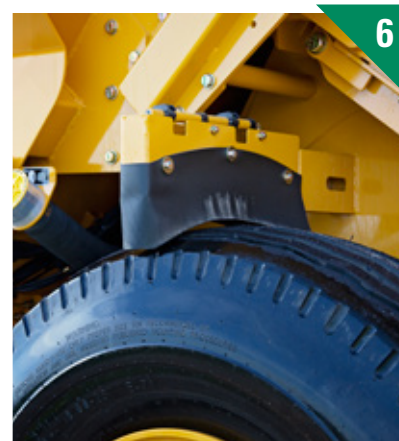
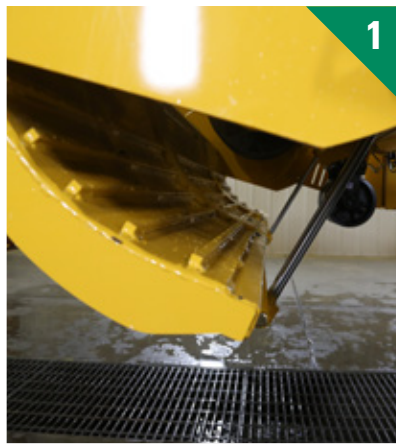
TIRE SPRAY DOWN.

The optional tire spray down system features nozzles for each tire and caster wheel. Spray frequency is programmable and controlled by the system, providing hands free operation for the entire day.

7

INTERNAL SPRAY DOWN.

An optional internal spray down system features nozzles located at the augers, chains, sprockets and remix chamber for improved coverage in hard to reach locations.



SPECS

WEIGHT	67,200 lb	30 481 kg
STORAGE CAPACITY	15 tons	13.6 mt
TRANSPORT HEIGHT	11' 5"	3480 mm
TRANSPORT LENGTH	54' 1"	16 485 mm
TRANSPORT WIDTH	9' 10"	2997 mm
WORKING HEIGHT	15'	4572 mm
ENGINE	Cat® C7.1 Tier 3	
HORSEPOWER	250 hp	186 kW
TRANSPORT SPEED (MAX)	8.7 mph	14 km/hr
WORKING SPEED	202 fpm	61 mpm
CONVEYOR CAPACITY	600 tph	544 mtph
CONVEYOR SLAT WIDTH	36"	914 mm
ELEVATOR CAPACITY	1,000 tph	907 mtph
ELEVATOR SLAT WIDTH	56"	1422 mm
FUEL TANK CAPACITY	110 gal	416 L
HYDRAULIC TANK CAPACITY	80 gal	303 L
TURNING RADIUS-REAR STEER	17'	5.2 m

OPTIONAL EQUIPMENT

Rear steer
Truck hitch
Conveyor auto chain tensioner
Canopy
AR400 1/4" (6.35 mm) storage hopper liner
Chromium carbide floor plates
Separate 60 gal (227 L) tank for tire spray system
Chain and sprocket internal spray down system
Tire spray system
LED lights (2 head, 6 work, 2 ground and strobe)
LED blade lights
Truck signal lights
12 kW generator
Fume extraction
Paver hopper management with distance to paver
Camera system w/ 7" (178 mm) color display & 4 cameras
Automatic greaser - 40 points
13 ton (11.8 mt) hopper insert
5 ton (4.5 mt) or 8 ton (7.2 mt) hopper insert extension



WWW.WEILERPRODUCTS.COM

Materials and specifications are subject to change without notice. Featured machines and photos may include optional equipment. See your Caterpillar Dealer for complete product and application information including available options. All rights reserved.