

E1250B

REMIXING TRANSFER VEHICLE



ENGINEERED INNOVATION



Proven Reduction of Segregation

A true remix of material. Weiler's patented twin-interlaced auger system sets the standard for reducing particulate and thermal segregation. All material is remixed in the chamber before dropping onto the discharge conveyor. With only one elevator and one conveyor, the plant-to-mat time frame and number of material drops are reduced, helping maintain proper temperatures for superior mat quality.

1

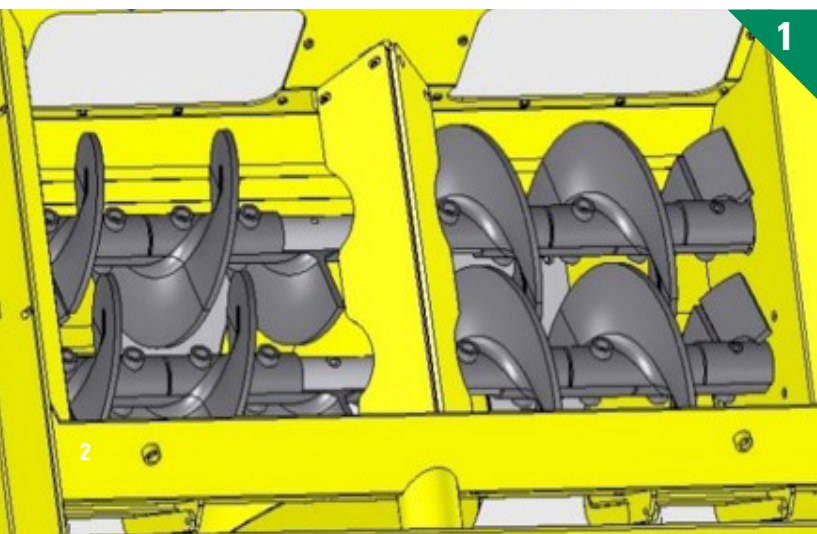
PATENTED REMIX CHAMBER.

Weiler's patented, twin-interlaced auger system provides a true remix with superior reduction of particulate and thermal segregation while processing up to 600 tph (544 mtph).

2

VARIABLE SPEED.

The variable speed discharge conveyor adjusts to match the speed of the elevator, which reduces chain wear and maintenance costs. Material quality also sees a significant improvement as a larger volume of material is carried at a lower RPM, considerably reducing segregation.





3

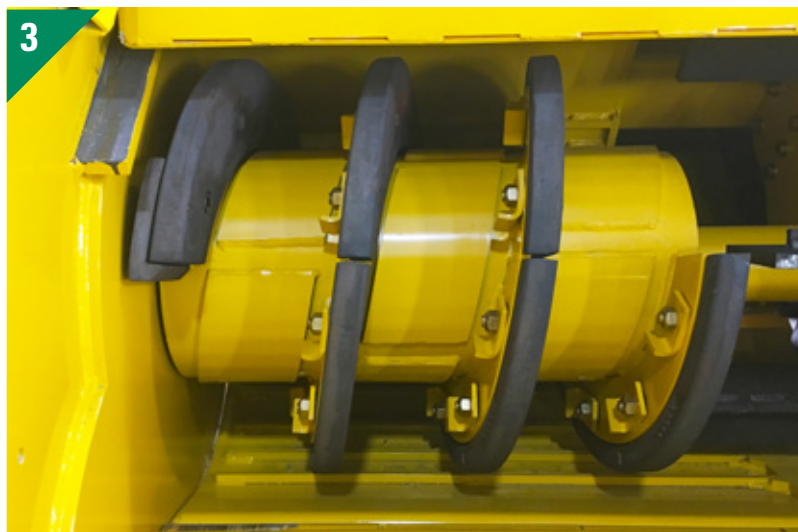
HEAVY DUTY AUGERS.

22" (56 cm) cast augers manage material flow to the elevator for even transfer from the truck for minimal segregation. Small, replaceable segments lower operating costs and a replaceable leading edge helps clean high buildup corners.

4

HYDRAULIC BAFFLE.

The hydraulic baffle controls the flow of material into the elevator for the most efficient unloading of trucks. A smart cylinder does not allow the baffle to open more than the optimal position without override.



Superior Material Handling

Keep the paving train moving. The quick transfer of material from trucks to the paver is key to non-contact, non-stop paving. Weiler's innovative features help ensure smooth truck exchanges to keep the operation moving and hit smoothness bonuses.



1

SMOOTH TRUCK EXCHANGES.

Keep the paving train running smoothly with the hydraulically extendable, oscillating push roller that matches varying truck configurations. The integrated scrapers and easy-to-remove rollers simplify maintenance.

1

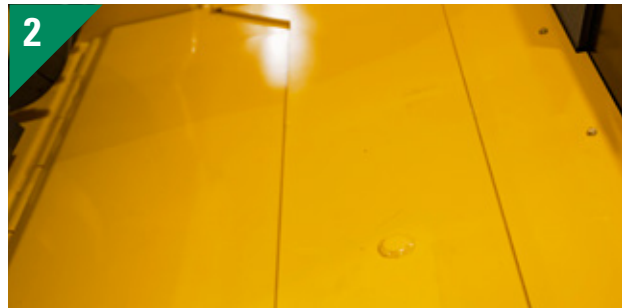


2

DUMP ASSIST.

The dump assist hydraulic moving floor helps pull the last remaining material from the truck. A single push of a button activates the movement to minimize truck exchange time.

2



3

AUTO DUMP.

The auto dump feature raises the dump hopper in stages and the baffle with the push of a button. The dump speed is in relation to chain speed and will pause if the chain stops. Push the button once cycle has completed and the hopper and baffle lower to operating position.

3



4

OFFSET PAVING.

The 600 tph (544 mtph) capacity discharge conveyor swings out 10'2" (3.1 m) to either side of the machine for offset paving. The ability for the conveyor to lift the paver hopper insert eliminates the need for additional equipment on the jobsite.

4



5

WINDROW HEAD ATTACHMENT.

The optional windrow head attachment features a pressure adjustable, floating elevator, windrow shaper and adjustable, break-away scraper. The dump head to windrow conversion can be completed in approximately 4 hours.

5





Control Your Cost of Operation

Reduce maintenance costs. In an industry where contractors can spend tens of thousands of dollars on machine maintenance per year, controlling the cost of operation can make the difference in your bottom line. At Weiler, we take the call to control cost of operation seriously, with the goal of extending machine life through innovative design and the use of durable, high-quality components in our manufacturing process.

1

SPLIT SHAFT DESIGN.

Our split foot shaft design features separated center bearings for simplified service. Bearings have triple-seal protection, along with protected, remote grease lines to extend the life of the component.

1



2

QUALITY FIRST.

At Weiler, we understand our machines are the sum of their parts. For example, our solid, one-piece machined head shafts undergo extensive machining in-house which reduces fatigue failures found with welded joints.

2



3

AUTOMATIC CHAIN TENSIONING.

The automatic hydraulic chain tensioner sets proper chain tension every 40 hours. Proper and even chain tension extends the life of wear components and the automatic feature makes it one less maintenance point the crew has to perform themselves.

3



4

MINIMIZE COMPONENTS.

High-torque, direct-drive motors power the elevator and conveyors for maximum hydraulic efficiency while eliminating high-wear planetary gear boxes. A loop flush return system provides thermal relief and extends the life of the motor.

4



5

CHROMIUM CARBIDE.

An abrasion-resistant, chromium carbide wear plate is standard below the conveyor foot shaft. Chromium carbide floor plates are optional on the conveyor or both the conveyor and elevator for extended wear life.

5



Making the Most of Your Machine Operation

Operator comfort is key to a productive day on the job. The high back seat, easy-to-reach controls and shifting platform, located at the front of the machine, give the operator complete control of the E1250B while providing excellent visibility. Innovative Weiler features enhance operation and crew productivity.

1

EXCELLENT VISIBILITY.

Located at the front of the machine, the hydraulically extendable operator's platform shifts 24" (610 mm) in either direction, giving the operator a better line of sight to communicate with ground, paver and trucking personnel.

2

WITHIN EASY REACH.

Ergonomic controls located within easy reach of the operator. The operator station shifts side-to-side and features a high-back, heated suspension seat that rotates 357°.

3

MAINTAIN YOUR DISTANCE.

The optional distance to paver control utilizes a radar to keep the E1250B and paver at a set distance and can be engaged from either a stopped or moving position.

4

PAVER HOPPER MANAGEMENT.

The optional paver hopper management system features a sonic sensor that maintains the level of material in the hopper insert by controlling the speed of the elevator and discharge conveyor.

5

GROUND LEVEL CONTROL.

The dual-side, ground-level control panels allow the ground operator complete control of the dump hopper, elevator and tire spray down system. The panel is angled for accessibility and the buttons are backlit for enhanced visibility.

6

CONVEYOR CONTROL STATION.

Located at the rear of the machine, the conveyor control station allows complete control of the discharge conveyor from ground level to simplify daily maintenance and hopper insert placement into the paver.

7

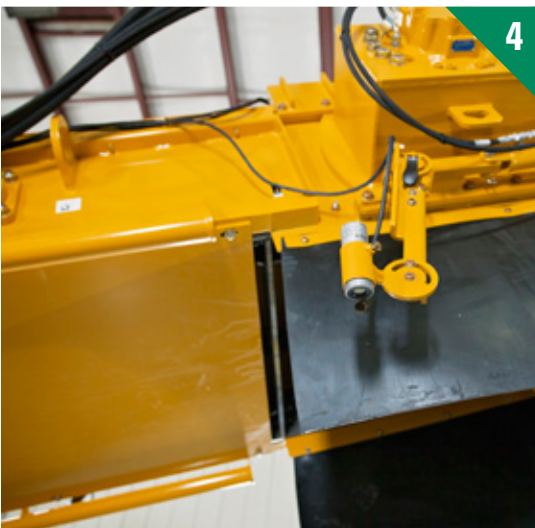
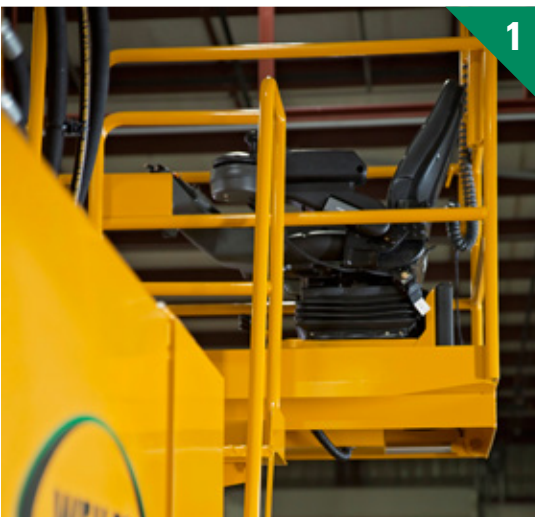
CANOPY COVER.

Optional canopy is available with or without glass and wipers. Canopy easily folds down with pressurized shocks for transport.

8

BLADE LIGHTS.

Optional LED blade lights improve visibility for night time work. The three (3) lights are available in either AC or DC and include mounting poles.



Keeping It Clean

Along with high quality components and design, keeping key daily, weekly and monthly maintenance schedules help extend machine life and adds residual value to your initial investment. Making it easier for your road crew to clean and monitor wear on the transfer vehicle pays dividends in the long run. Weiler has made a commitment to simplifying daily cleanout by embracing a design philosophy with a focus on accessibility.

1

AUGER ACCESS.

The full-width hydraulic cleanout door allows full access to the dump hopper, so crews can cleanout the excess material that creates build-up, especially on the corner augers.

2

SAVE HOURS.

Full-width drop down floors simplify cleanout and make it easier to perform chain inspection, saving your crew hours of time.

3

REMIX ACCESS.

Two hydraulically operated doors provide access to the remix chamber for daily cleanout and component inspection.

4

CONVEYOR CLEANOUT.

A hydraulic, full-width drop down floor simplifies cleanout and chain inspection for this regular inspection point.

5

ENGINE ACCESS.

Two large, ground-level doors provide excellent access to the engine, hydraulic components and radiator.

6

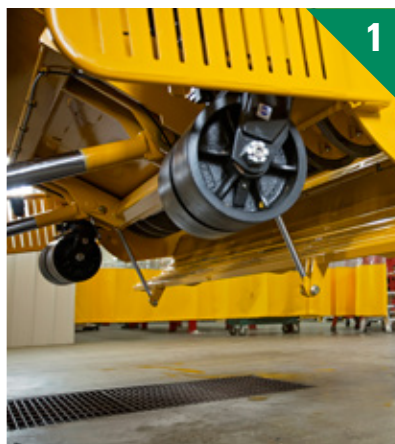
TIRE SPRAY DOWN.

The optional tire spray down system features nozzles for each tire and caster wheel. Spray frequency is programmable and controlled by the system, providing hands free operation for the entire day.

7

INTERNAL SPRAY DOWN.

An optional internal spray down system features nozzles located at the augers, chains, sprockets and remix chamber for improved coverage in hard to reach locations.



WEIGHT	53,400 lb	24 222 kg
TRANSPORT HEIGHT	11' 4"	3454 mm
TRANSPORT LENGTH	43' 7"	13 300 mm
TRANSPORT WIDTH	9' 10"	2997 mm
WORKING HEIGHT	14' 8"	4470 mm
ENGINE	Cat® C7.1 Tier 4	
HORSEPOWER	250 hp	168 kW
TRANSPORT SPEED (MAX)	9.8 mph	15.8 km/hr
WORKING SPEED	202 fpm	61 mpm
CONVEYOR CAPACITY	600 tph	544 mtph
CONVEYOR SLAT WIDTH	36"	914 mm
ELEVATOR CAPACITY	600 tph	544 mtph
ELEVATOR SLAT WIDTH	56"	1422 mm
FUEL TANK CAPACITY	130 gal	492 L
HYDRAULIC TANK CAPACITY	86 gal	325 L
TURNING RADIUS	19'	5.8 m
TIRES	High Flotation 17.5"-25" 20 ply	

REQUIRED OPTION

Remix system

OPTIONAL EQUIPMENT

Truck hitch

Windrow head in addition to truck dump hopper

Canopy

Chromium carbide floor plates

Separate 60 gal (227 L) tank for tire spray system

Chain and sprocket internal spray down system

Tire spray system

LED lights (2 head, 6 work, 2 ground and strobe)

LED blade lights

Truck signal lights

12 kW generator

Paver hopper management with distance to paver

Camera system w/ 7" (178 mm) color display & 4 cameras

Automatic greaser - 40 points

13 ton (11.8 mt) hopper insert

5 ton (4.5 mt) or 8 ton (7.2 mt) hopper insert extension



WWW.WEILERPRODUCTS.COM

Materials and specifications are subject to change without notice. Featured machines and photos may include optional equipment.
See your Cat Dealer for complete product and application information including available options. All rights reserved.